

# BELINEA

MARBELLA

---

INFORMATION ON OUR WORKFLOW  
AND PRICING

# BELINEA

---



**Discover the art of refined living with Belinea** where we don't just offer furniture—we bring dreams to life with our unique interior and exterior designs. Strive for timeless elegance in every corner of your living space and garden with our modern creations that perfectly balance functionality and aesthetics.

Belinea's designs embody the essence of contemporary sophistication, seamlessly blending style and comfort. Our expert designers take you on a journey of inspiration, transforming every space into a harmonious and refined environment. From sleek lines to carefully curated details, we believe that creating a timeless interior is an art in itself.

# BELINEA

---

## WHAT IS INCLUDED WHEN WORKING WITH US?

- 01 A piece of art interior
- 02 2d space planning according to the clients needs/wishes ( 3 propositions )
- 03 Furniture arrangement or custom made furniture concepts
- 04 3d visualizations
- 05 Technical drawings and floorplans
- 06 Material overview

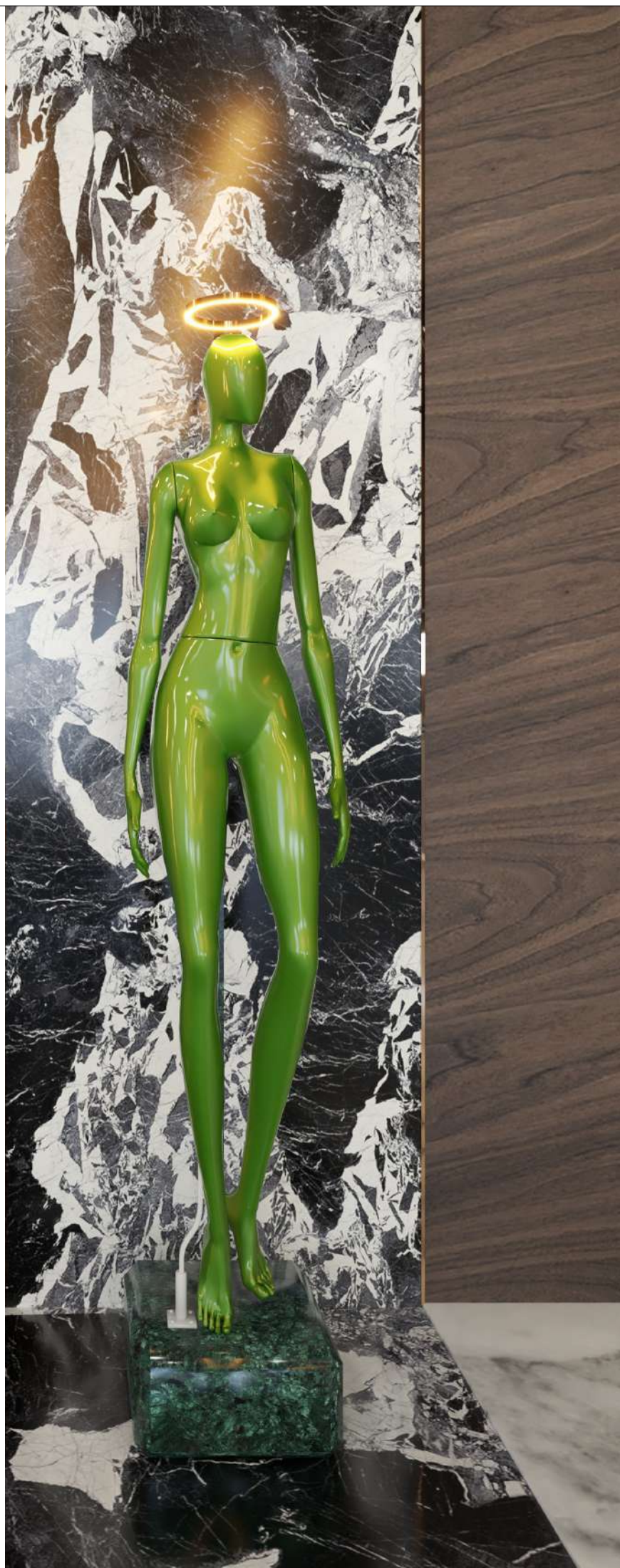




# BELINEA

## PROCESS

- 01 Price offer and contract signing
- 02 Discuss the clients needs and translate this into a 2d floorplan sketch with several options. Some minor technical tasks may be necessary, such as measuring the space.
- 03 After approval of the 2d interior setup, we can proceed to implement the concept/materials into the interior. The feeling the client wants to achieve with the new interior wil be determined in this step.
- 04 When the concept is approved, we provide the client with 3d visuals to show the end result of the interior. Including real time materials, furniture, custom made objects and lighting.
- 05 After the 3d approval we will provide the client with technical drawings on custom made furnitures, detailed elements and multiple view floorplans with dimensions and assigned materials.
- 06 Enjoy your new state of art investment.







# BELINEA

## PRICING FOR INTERIOR DESIGN

This price refers to the interior design:

€ 100,- per square meter, for interiors between 100m<sup>2</sup> and 300m<sup>2</sup>

€ 90,- per square meter, for interiors between 300m<sup>2</sup> and 500m<sup>2</sup>

€ 75,- per square meter, for interiors from 500m<sup>2</sup> and up.

including:

- first acquaintance and discovering the clients wishes on site or in our office
- arranging the 2d floorplan setup and finding the best solution within 3 different floorplan options. More solutions or extra adjustments will be calculated an extra 10,- per square meter of adjustment.
- creation of a moodboard, material selection, and an interior/story concept. Reference images from the clients can be submitted and will be taken in account, but eventually the client chooses for the Belinea style, so we don't copy other styles or other designers.
- 3d visualization of the interior/exterior. Every individual function will be displayed in several images, to give a detailed image of the end result. Minor adjustments can be made within the visuals without extra charging. Big adjustments will be charged an extra 250,- per image.
- Final floorplans and section cuts, including the positions of the electricity points / smart home systems, airconditioning, lighting plan, ventilation and water installation.
- Detailed drawings on custom made furnitures, kitchens or complex custom details.
- A material and product overview and the position and quantity of the materials/products with the individual element prices.



# BELINEA

## TIME REQUIREMENTS

Design process from first to last step can pend between 4 weeks and 12 weeks, depending on project size and complexity. An average time on designing a 100 m2 space is around 4 weeks and 500+ m2 around 12 weeks. (for client's refference)

## PAYMENT

Design payment stages

- 20% - after contract signing. First stage before the process begins.
- 50% - after the ideal 2d floorplan approval
- 30% - after approval of the 3d visualizations

A new interior is an investment in a new part of your life or a new part of your business.  
It is a process that should be engaged with love and joy,  
that is what Belinea wants to offer you.

Sincerely,  
design team  
BELINEA

[www.belineamarbella.com](http://www.belineamarbella.com)  
[info@belineamarbella.com](mailto:info@belineamarbella.com)